

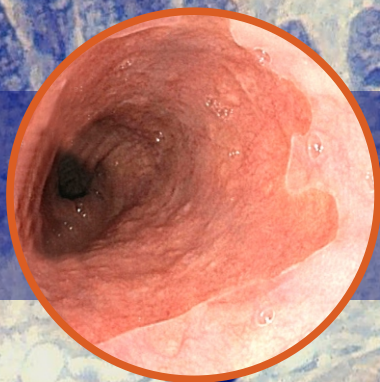
BARRETT'S ESOPHAGUS 2019



iNOVA4Health

NOVEMBER 29, 2019
IPO Lisboa

**FROM BIOLOGY
TO MANAGEMENT**



PROGRAM

COMMITTEES

Honorary Presidents

Professor Doutor Carlos Nobre Leitão

Professor Doutor Jorge Soares

Organizing committee

António Dias Pereira

Paula Chaves

Susana Mão de Ferro

Ricardo Fonseca

Joana Castela

Daniela Pereira

Faculty

António Dias Pereira

Carla Lopes

Carla Rolando

Cristina Chagas

Daniela Pereira

Fátima Carneiro

Guilherme Macedo

Inês Sá

Jaime Midões Correia

Joana Castela

Joana Gramacho

João Oliveira

Jorge Canena

José Mendes Almeida

Leonor David

Marília Cravo

Mário Dinis Ribeiro

Miguel Areia

Miguel Serrano

Nuno Almeida

Paula Borralho

Paula Chaves

Raf Bisschops

Raquel Sacarrão

Ricardo Fonseca

Ricardo Kuttner Magalhães

Rui Casaca

Susana Mão de Ferro

Vânia Braga

PROGRAM

FRIDAY NOVEMBER 29, 2019

- 08h30-09h00 **Opening session**
Chairperson: Carlos Nobre Leitão
- 08h30-08h40 **Grupo de Estudos do Esófago de Barrett (GEEB)**
A travel since the nineties
Paula Chaves
- 08h40-08h55 **Clinical, translational and basic research in IPO Lisboa:**
Barrett's as an example of two-way path
João Oliveira
- 08h55-09h00 **Opening notes**
António Dias Pereira
- 09h00-13h00 **Morning sessions**
- 09h00-10h30 **Round table I**
Barrett's Esophagus - biologic understanding and clinical implications
Chairpersons: Paula Borralho / Guilherme Macedo
- 09h00-09h20 **Concepts and definition(s)**
Paula Chaves
- 09h20-09h40 **The origins of Barrett's - driving from the stem cell to the goblet cell**
Leonor David

- 09h40-10h00 **Guidelines (ESGE, ASGE, ACG, AGA, BSG) and controversies. Should we stress the consensus or the differences?**
Mário Dinis Ribeiro / Inês Sá
- 10h00-10h30 **Discussion**
- 10h30-11h00 Coffee-break
- 11h00-12h30 **Round table II**
Barrett's and cancer risk – dysplasia and other risk markers
Chairpersons: Marília Cravo / José Mendes de Almeida
- 11h00-11h20 **From diagnosing to grading dysplasia – the pathologist dilemmas**
Ricardo Fonseca
- 11h20-11h40 **Searching for new markers for risk stratification**
Carla Lopes
- 11h40-12h00 **How to deal with the diagnosis of low-grade dysplasia?**
António Dias Pereira
- 12h00-12h30 **Discussion**
- 12h30-13h00 **Conference**
Chairperson: Cristina Chagas
Advanced imaging in Barrett's Esophagus: from trials to real world
Raf Bisschops
- 13h00-14h00 Lunch

14h00-16h00 After lunch simultaneous sessions

Session I: Pathology workshop

Chairperson: Fátima Carneiro

Faculty: Paula Chaves / Ricardo Fonseca / Daniela Pereira

14h00-14h40 Barrett's Esophagus – differential diagnosis

CLES / Carditis

IM of the GEJ / Ultra-short BE segments / BE

14h40-15h20 Dysplasia in BE biopsy

Reactive changes / Dysplasia

Indefinite for dysplasia / Low-grade; Indefinite for dysplasia vs High-grade

15h20-16h00 Endoscopic resections samples

Reporting Dysplasia (Low-grade / High-grade)

Reporting Carcinoma (Intramucosal / Invasive)

Session II: Endoscopy issues

Chairpersons: Carla Rolanda / Jaime Midões Correia

14h00-14h15 Quality in Upper-GI Endoscopy: the case for Barrett's Esophagus

Miguel Areia

14h15-14h30 How do I perform surveillance endoscopy in Barrett's patients?

Miguel Serrano

14h30-14h45 How do I manage visible dysplasia in Barrett's?

Susana Mão de Ferro

- 14h45-15h00 **Barrett´s ablation: when, where, how, by whom?**
Joana Castela
- 15h00-15h30 **Discussion**
- 15h30-15h50 **Radiofrequency ablation: the evidence revisited by the expert in 2030**
Raf Bisschops
- 15h50-16h00 **Discussion**
- 16h00-16h30 Coffee break
- 16h30-18h00 **Simultaneous evening sessions**
- Session I: Interactive session of endoscopic cases**
Chairpersons: Jorge Canena / Nuno Almeida
Faculty: Mário Dinis Ribeiro / Ricardo Kuttner Magalhães / Susana Mão de Ferro
Ricardo Fonseca / Daniela Pereira / Rui Casaca
- Session II: Nursing workshop. Diagnostic and therapeutic endoscopy in Barrett's Esophagus - the nurse's role.**
Faculty: Joana Gramacho, Raquel Sacarrão, Vânia Braga
- 18h00-18h10 **Closing remarks**
Susana Mão de Ferro / Ricardo Fonseca

SPONSORS

iNOVA4Health

- Advancing Precision Medicine -



Scientific Sponsors

Instituto Português de Oncologia de Lisboa Francisco Gentil (IPO Lisboa)

ipofg@ipolisboa.min-saude.pt

Phone: (+351) 217 229 800
Rua Professor Lima Basto
1099-023 Lisboa, Portugal
www.ipolisboa.min-saude.pt



Sociedade Portuguesa de Endoscopia Digestiva

geral@sped.pt

Phone: (+351) 217 995 533
R. Abranches Ferrão N° 10 - 14º
1600-061 Lisboa, Portugal
www.sped.pt



Sociedade Portuguesa de Gastroenterologia

geral@spg.pt

Phone: (+351) 217 995 530
R. Abranches Ferrão N° 10 - 14º
1600-061 Lisboa, Portugal
www.spg.pt



Sociedade Portuguesa
de Gastroenterologia

iNOVA4Health

Hugo Soares (External Affairs): hsoares@ibet.pt

Carolina Figueira (Marketing & Communications): carolina.figueira@ibet.pt

Phone: (+351) 214 469 361 / (+351) 214 427 787
Av. República, Qta. do Marquês - Estação Agronómica Nacional - INIAV
Edifício iBET/ITQB
2780-157 Oeiras, Portugal
www.inova4health.com

iNOVA4Health

Organization

Serviço de Anatomia Patológica
Serviço de Gastreenterologia
IPO Lisboa

Registrations for the conference

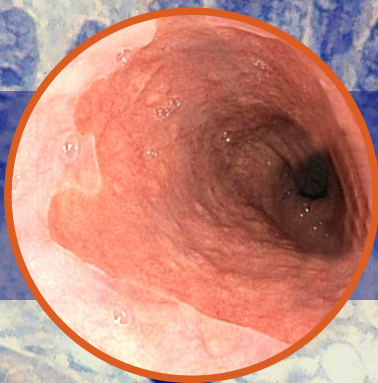
Barrett2019@ipolisboa.min-saude.pt

For any questions

Susana Costa

spinheiro@ipolisboa.min-saude.pt

Phone: (+351) 217 200 492



IPO Lisboa

